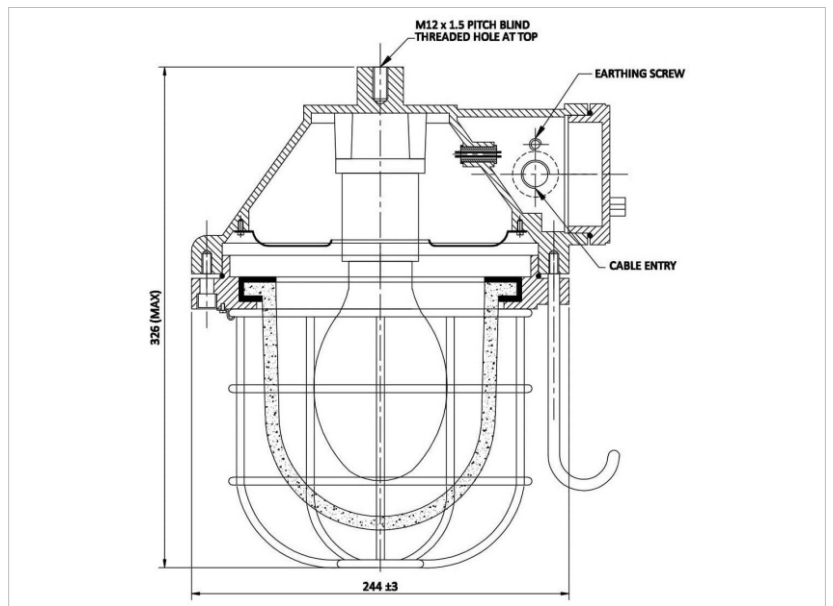


# PATCO FLAME PROOF PRODUCTS

Manufacturer of : Flameproof / Weatherproof, Electrical Equipment, Lighting Fittings, LED Lighting Fittings, Instruments Enclosure & Cable Glands Tested Certified by CIMFR, Dhanbad

## FLP / WP WELL GLASS FITTING



Catalogue No.	PFP/WG/06
Type of Ex-Protection	AS PER IS 2148-2004/IEC-60079-1:2007
Zone Classification	Zone 1 & Zone 2
Gas Group	Gas Group I, IIA, IIB
Ingress IP Protection	IP-65 IS / IEC60529-2001
Material of Contraction	Die Cast Aluminum Alloy LM6
Rating	160 MLL, 2 X 23W CFL, 36W CFL 30W , 45W, 60W LED
Wire Guard	M.S., White Powder Coated
Lamp Holder	Enclosed Break Porcelain E-27
Glass	TYPE "A" Toughened AS PER IS:2206 / 84 (PART-I)
Paint	Epoxy Polyester Powder Coating
Earthling	Internal: 01 No. & External: 2 Nos.
Cable Entry	02 Nos. for M20 ( 3/4" ET)
Hardware	Stainless Steel